



An ISO 9001:2015 accredited co.



Mahant



QUALITY

PERFORMANCE

INNOVATION



Mahant
Mileage Redefined





Why Retread?

Tyre manufacturers these days, design tyres to offer service, greater than the tread will last. By retreading the tyre casing, an operator can harvest the benefits of these greatly designed tyres. One of the key benefits is lowering the money spent on tyres. It costs about 25% to 30% of a new tyre to retread a tyre casing. Two retreaded casings are worth one new tyre.

Retreaded tyres are enduring as long as a new tyre, and in some cases even longer. With the savings from retreading a tyre, an operator can significantly reduce their cost-per-kilometre and still achieve or exceed the same number of kilometres driven per tyre.

Retreading tyre is one of the most effectual ways to reduce and reuse tyres. Not only will this save money, but it is also the eco-friendly way to help the environment because we can use the tyre casing multiple times after the original tread is worn off.

Oil is an important component in the manufacture of tyres. A retread uses about 1/3 of the crude oil needed to manufacture a new tyre. Retreading is a crucial part to conserve our natural resources as well as utilizing the tyre casings instead of dumping them into landfills or reducing them to ashes.

Retreaded tyres are an unfussy way a company can help to be.

**Tyre retreading can be done on the tyres of
Airlines , Buses, Cars & Motorcycles, Rickshaws, MPV & Jeeps,
Trucks, Tractors, OTR (Off the Road)**

Why Mahant?

Established in the year 1989, Mahant industries is the name to reckon with in the field of manufacturing Tread rubber, Bonding gum, Tyre and Tube patches, Black Vulcanising cement and allied products. A trusted performer, Mahant has become one of the most sought-after rubber solutions providers for the tyre retreading industries in India today.

Mr Ajit D Patil, a technocrat, with experience and expertise is ably assisted and supported by qualified personnel in marketing, procurement, technical, quality assurance, research and development departments.

MAHANT state of the art manufacturing plant is located on the border town of Belgaum, Karnataka which is considered as the transport hub between Maharashtra, Karnataka and Goa. They have made heavy investment in infrastructure Viz rubber compound done in sophisticated and automated internal mixers (different mixers for mixing CTR, PCTR and Bonding Gum) Kneaders, PLC controlled hydraulically operated, precured tread presses, mixing mills, 6 inch hot feed extruders and 8"x 24" cushion calendar with cooling lines, also has access to the finest of testing equipment's available, for testing, quality control and development.

MAHANT follows stringent quality standards for incoming raw materials, in-process compounds and finished products. The formulation for all the products is developed in house as per market specifications, thus giving an edge to all its products. Their system is accredited with ISO 9001:2015 certification.



Customization

MAHANT's processes and procedures are premeditated to be sinuous to satisfy patron's necessities without compromising on quality standards.

R & D Center

In-house cutting-edge center to identify new knowledge & ideas and turning the ideas into tangible cost-effective products by competent, technically trained people.

Superior Quality

Unswerving and prudent adherence to the time-honoured recipes by erudite manpower expending the state-of-the-art machinery and utilities.

On-time Conveyance

Captive fleet, a grid of customers, great highways, proximity to major ports and centres empowers MAHANT with cost-effective, efficacious and quicker deliveries & service.

Talented manpower

Presence in an educational hub. Admirable contacts in the Rubber & Tyre Industry, MAHANT has hired the best in all of its departments with incessant training and consulting by the doyens of the rubber industry.

Propelled Machinery

Facilities are ramped up with state-of-the-art machinery and utilities to produce consistently, productively and profitably.

Worldwide Customers Relations

MAHANT's products weave magic on their customers, they not only delight the needs of the customers they radiate, reverberation they are growing and found on the shelf in more than 22 realms, world over.



Our key Product Offerings

1. Conventional Tread Rubber (CTR)
2. Precured Tread Rubber (PCTR)
3. Rubber Compounding
4. Under Tread Strip (UTS)
5. Bonding/ Cushion/VulGum
6. Tyre and Tube Repair Materials
7. Black Vulcanizing Cement (BVC)
8. Chemical Vulcanizing Fluid (CVF)

CONVENTIONAL TREAD RUBBER (CTR)

Mold cure Rubber/ Uncured Rubber/ Green rubber/ Die sized rubber for hot tyre remolding

MAHANT'S conventional tread rubber features easy application by the retreader, size, accuracy, pliability and seamless finish with excellent curing properties. These products are manufactured to maintain low heat buildup, moderate shelf life, cure in less time thus offering high energy savings, accurate sizes thus providing outstanding interaction between casing and the mold.

Different types of compounds of tread rubber are manufactured and made available to cater to a wide range of condition of use and as per customers specified sizes



Segments of CTR in OTR (Off the Road)

OTR - SF (Comes in transparent cushion poly, with Mahant OTR-SF name embossed on the tread rubber surface with the cure time/gauge)

OTR - Gold (Comes in Red cushion poly, with Mahant OTR-Gold name embossed on the tread rubber surface with the cure time / gauge)

OTR - Platinum (Comes in Green poly, with Mahant Platinum name embossed on the tread rubber surface with the cure time /gauge)

Recommended for Tractor and Heavy-duty tyres



Segments of CTR in Poly-OTR (On the Road)

Poly – SF (Comes in transparent cushion poly, with Mahant Poly-SF name embossed on the tread rubber surface with the cure time/gauge)

Poly - Gold (Comes in Red cushion poly, with Mahant Poly-Gold name embossed on the tread rubber surface with the cure time/gauge)

Poly - Platinum (Comes in Green poly, with Mahant Poly-Platinum name embossed on the tread rubber surface with the cure time/gauge)

Recommended for use on Cars, Light, Medium & Heavy-duty high speed vehicle tyres

Segments of CTR-OTR (Slab/Camel Black/Contour)

Eco - OTR & Poly (Comes in transparent cushion poly, with Mahant Eco name embossed on the tread rubber surface with the cure time/gauge)

Price sensitive compound can be used for both type of applications

Note:

- CTR Curing time per gauge: 5 min/ gauge at 150-degree C.
- CTR treads are packed into HDPE woven fabric bags which are laminated from the inside.
- CTR should never be exposed to water, oil & grease, air & dust, heat & sunlight.
- CTR treads should be consumed within 90 days from the date of manufacture.
- CTR treads used/unused should always be kept and maintained in the original packing.

BLACK VULCANISING CEMENT

MAHANT'S BVC is manufactured using the highest quality solvent dissolved with the specially designed rubber compound made from cold rolled cold annealed sheets, compatible with both the pre-cured and mold cured process application and repairing. Fast Drying, penetrating, heat curing cement to be used on buzz outs, exposed fabric and with uncured gums. Should be used with repairs that are vulcanised with heat and pressure.

Mahant's BVC comes in a packaging of 25 liter

Note:

- Suitable for curing temperature of 150-degree C, 125-degree C, 99-degree C.
- Highly Flammable: Flash point below 0 Degree C.
- Contains petroleum spirit hence toxic.
- Always keep the drum closed when not in use.



PRE-CURED TREAD RUBBER (PCTR)

MAHANT'S Pre-cured Treads are made from the finest compounds and are available in more than 50 designs and 220 different sizes and dimensions with width ranging from 98 mm to 250 mm. The precured treads are accessible in Bias and Radial applications with heavy/medium/light weight treads. Customized tread lengths can also be manufactured by Mahant for bigger orders.



SEGMENTS IN PCTR

PCTR - Premium (Comes with a Green line on the cured tread surface and is packed in white HDPE bags branded with Mahant logo)

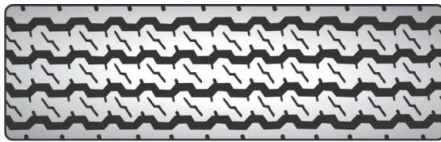
PCTR - Standard (Comes with a Yellow line on the cured tread surface and is wrapped in natural poly transparent film / In special cases yellow HDPE bags were transshipment is involved)

Note:

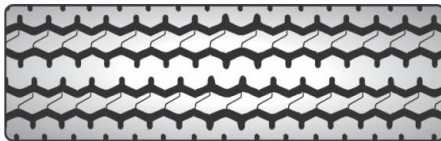
- Always store PCTR treads in a cool, clean and dark place
- Products are tested to suit the required operating conditions.
- PCTR treads should never be exposed to water, oil & grease, air & dust, heat & sunlight.
- PCTR treads used/unused should always be kept and maintained in the original packing.
- PCTR treads should not be rebuffered on the sanded surface especially on the hollow under tread surface. (you can do on the contour under surface only if the shine is visible).

**TITAN GRIP
(MTG)**

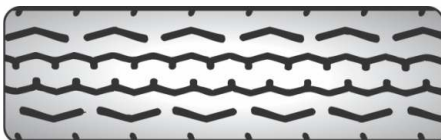

SI No	Base width (mm)	Length (Inches)	NSD (mm)	App Weight (kg)
1	240	148	15	16.0
2	240	136	15	14.8
3	240	132	15	14.4
4	220	128	16.5	13.6
5	210	128	16	12.3
6	205	128	15	11.5

**COMMANDER
(MCO)**


SI No	Base width (mm)	Length (Inches)	NSD (mm)	App Weight (kg)
1	165	100	11.5	5.8
2	160	98	13.5	6.2

**COOL TRACK
(MCT)**


SI No	Base width (mm)	Length (Inches)	NSD (mm)	App Weight (kg)
1	140	92	12	4.3
2	124	90	12	3.9

**PORT MILER
(MPM)**


SI No	Base width (mm)	Length (Inches)	NSD (mm)	App Weight (kg)
1	205	127	16	12.8

**MINES SUPER
(MMS)**


SI No	Base width (mm)	Length (Inches)	NSD (mm)	App Weight (kg)
1	205	128	13.2	11.3

**CONTI RIB
(MCR)**

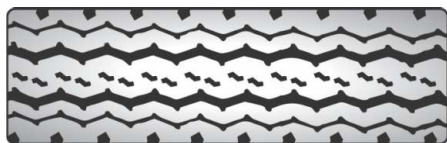

SI No	Base width (mm)	Length (Inches)	NSD (mm)	App Weight (kg)
1	205	127	12.5	10.8

**ROVER
(MRO)**


SI No	Base width (mm)	Length (Inches)	NSD (mm)	App Weight (kg)
1	124	90	12.5	4.1

**TRACTOR
FRONT (MTF)**

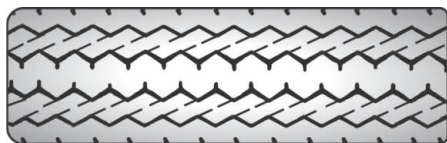

SI No	Base width (mm)	Length (Inches)	NSD (mm)	App Weight (kg)
1	160	95	15.5	5.7
2	140	104	17.5	5.7
3	140	90	17.5	4.9
4	128	90	14	4.1

ROADMASTER HEAVY (MRH)


SI No	Base width (mm)	Length (Inches)	NSD (mm)	App Weight (kg)
1	245	148	15.5	17.4
2	245	136	15.5	16
3	205	136	15.5	13.8
4	205	127	15.5	11.8

SEMI LUG (MSL)


SI No	Base width (mm)	Length (Inches)	NSD (mm)	App Weight (kg)
1	215	128	14.5	12.4
2	205	128	13.5	10.5
3	160	99	14	6.6
4	150	100	13	6.1
5	132	90	12.5	4.3

ULTRA MILLER (MUM)


SI No	Base width (mm)	Length (Inches)	NSD (mm)	App Weight (kg)
1	205	128	13.5	10.8
2	160	98	12.5	6.3
3	150	99	13.5	5.7

FLEET TRACK (MFT)

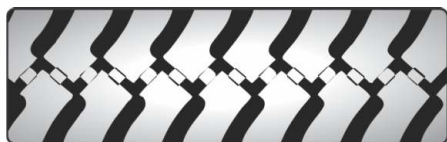

SI No	Base width (mm)	Length (Inches)	NSD (mm)	App Weight (kg)
1	203	127	12	9.9
2	186	124	12	8.9

EXEL LUG (MXL)


SI No	Base width (mm)	Length (Inches)	NSD (mm)	App Weight (kg)
1	205	127	12.5	10

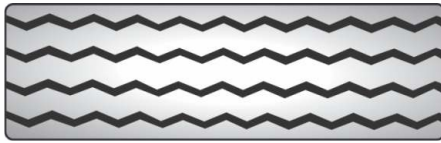
ZUPER LUG (MZL)


SI No	Base width (mm)	Length (Inches)	NSD (mm)	App Weight (kg)
1	225	148	14.5	14.5
2	225	136	14.5	13.2
3	225	128	14.5	12.5
4	220	147	14	14
5	220	128	14	12.2
6	215	148	14	13.8
7	215	127	14	11.8
8	205	128	15	11.5
9	205 (L W)	127	14.5	10.4

LUG LOGGER (MLL)


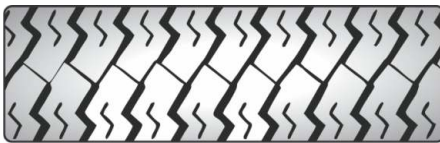
SI No	Base width (mm)	Length (Inches)	NSD (mm)	App Weight (kg)
1	225	149	15.5	15.1
2	225	133	15.5	13.6
3	225	130	15.5	13.2
4	215	130	15.5	12.8
5	205	127	14.5	10.8

AJAX (MAJ)



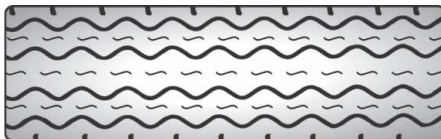
SI No	Base width (mm)	Length (Inches)	NSD (mm)	App Weight (kg)
1	208	127	13.5	11.5
2	205	127	14	11.4
3	205 (L W)	127	12.5	10.3
4	187	124	14	9.9
5	185	124	13.5	9.1
6	168	118	13.5	8.3
7	168	105	13.5	7.3
8	160	98	12.5	6.1
9	156	98	12	5.6
10	150	100	13	5.7
11	140	93	11.5	4.9
12	133	91	12	4.5
13	130	90	11.5	4.4
14	120	91	11	4.2
15	102	126	9	3.9

LUG MASTER (MLM)



SI No	Base width (mm)	Length (Inches)	NSD (mm)	App Weight (kg)
1	205	129	13.8	11.3

STATE TRANS (MST)



SI No.	Base width (mm)	Length (Inches)	NSD (mm)	App Weight (kg)
1	195	124	13.5	10.3

ROAD STAR (MRS)



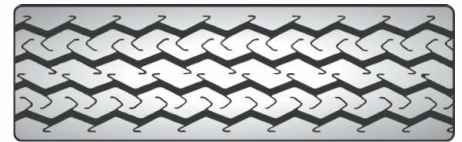
SI No	Base width (mm)	Length (Inches)	NSD (mm)	App Weight (kg)
1	205	128	14.5	10.9
2	205 (L W)	125	11.5	8.1
3	187	125	14	9.9

RIB LUG (MRL)



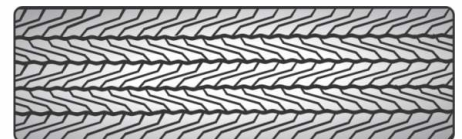
SI No	Base width (mm)	Length (Inches)	NSD (mm)	App Weight (kg)
1	150	95	11	4.3

TRACK SUPER (MTS)

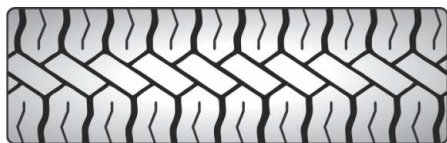


SI No	Base width (mm)	Length (Inches)	NSD (mm)	App Weight (kg)
1	98	120	9.5	3.4

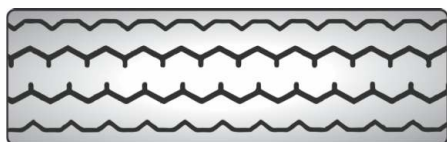
POWER TRACK (MPT)



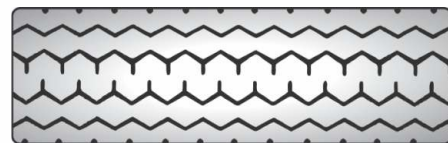
SI No	Base width (mm)	Length (Inches)	NSD (mm)	App Weight (kg)
1	120	125	9	4
2	120	67	9	2.2
3	100	118	9	3.2

**CROSS BAR
(MXB)**


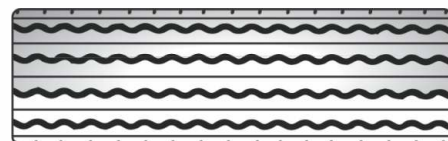
Sl No	Base width (mm)	Length (Inches)	NSD (mm)	App Weight (kg)
1	215	128	14.5	11.1
2	210	128	14.5	11.8
3	205	128	14.5	11.4
4	205 (L W)	128	13.5	10.2
5	195	128	14.5	10.3
6	195	123	14.5	10
7	185	124	12.5	8.5
8	185	115	12.5	8
9	170	118	14	7.6
10	170	105	14	6.8
11	170	100	14	6.4
12	160	97	12.5	5.5
13	150	95	11	5

**VIKING
(MVK)**


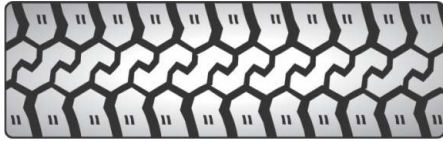
Sl No	Base width (mm)	Length (Inches)	NSD (mm)	App Weight (kg)
1	205	127	12	10.8
2	205 (L W)	125	10	8
3	187	122	13	7
4	160	97	11.5	5.8
5	150	99	11.5	5.5
6	143	91	11	4.4
7	140	93	11.5	4.8

**CHALLENGER
(MCH)**


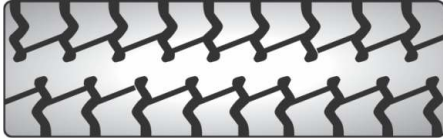
Sl No	Base width (mm)	Length (Inches)	NSD (mm)	App Weight (kg)
1	215	127	13.5	10.9
2	210	127	14	11
3	205	127	14	10.4
4	205 (L W)	127	13.5	9.9
5	195	127	13.5	10.1
6	195	122	13.5	9.8
7	187	124	14	9.8
8	185	124	13.5	8.8
9	182	124	12	8
10	170	118	13	7.6
11	170	105	13	6.8
12	170	99	13	6.4
13	160	97	11	5.3
14	150	93	11	4.7
15	140	91	11	4.2
16	130	88	11	3.7
17	120	132	11	5.9
18	110	127	11	4.4

**RAYNER RIB
(MRR)**


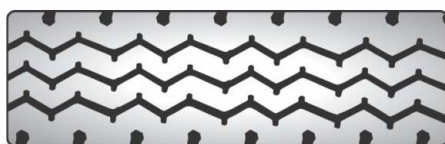
Sl No	Base width (mm)	Length (Inches)	NSD (mm)	App Weight (kg)
1	210	127	13.5	11

**RAYNER
GRIP (MRG)**


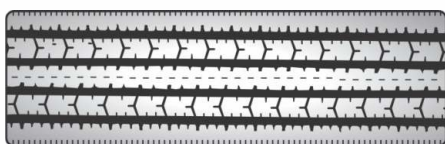
SI No	Base width (mm)	Length (Inches)	NSD (mm)	App Weight (kg)
1	215	128	14.5	11.5

**JET TRACK
(MJT)**


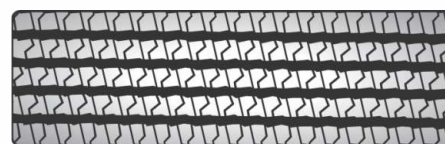
SI No	Base width (mm)	Length (Inches)	NSD (mm)	App Weight (kg)
1	215	127	13.5	11.1
2	210	128	13.5	11.1
3	205	128	14.5	11.0
4	205 (L W)	127	12.5	10.1
5	195	127	15	10.4
6	195	124	15	10.1
7	185	124	15	10.2
8	185	122	15	9.8
9	170	118	13	7.6
10	170	105	13	6.6
11	170	99	13	6.2
12	160	99	13	6.1
13	150	94	12.5	5.1
14	150	100	12.5	5.4

**MAXIMUS
(MMA)**


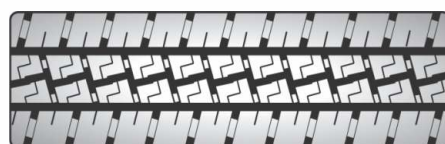
SI No	Base width (mm)	Length (Inches)	NSD (mm)	App Weight (kg)
1	250	148	13.8	14.3
2	250	136	13.8	13.4
3	235	147	14.5	14.5
4	235	136	14.5	13.5
5	235	138	14.5	12.9
6	230	148	13	12.9
7	230	130	13	11.3
8	225	147	14.5	14.2
9	225	136	14.5	13.2
10	225	128	14.5	12.4
11	220	147	14.4	14.2
12	220	136	14.4	13.1
13	220	128	14.4	12.4
14	210	128	14	11.1
15	205	127	13.5	10.3
16	178	118	13.5	7.8
17	178	105	13.5	7

**RIB MASTER
(MRM)**


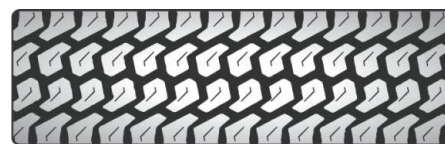
SI No	Base width (mm)	Length (Inches)	NSD (mm)	App Weight (kg)
1	220	130	14.2	12.1
2	210	128	13.5	11
3	205	127	13.5	10.5
4	175	118	12.5	7.8
5	175	105	12.5	6.9

**SUPER SPECTRA
(MSS)**


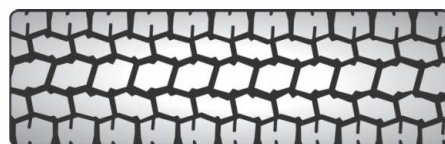
SI No	Base width (mm)	Length (Inches)	NSD (mm)	App Weight (kg)
1	220	128	13.5	11.6
2	210	128	13	11.4

**CARGO DRIVE
(MCD)**


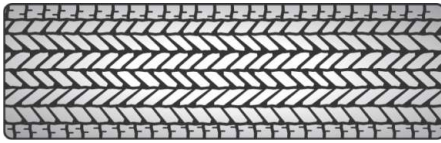
SI No.	Base width (mm)	Length (Inches)	NSD (mm)	App Weight (kg)
1	230	133	13.5	12.9
2	230	130	13.5	12.7
3	220	130	13.5	11.8
4	215	129	13.5	11.4
5	210	128	13.5	10.9

**DRIVE HEAVY
(MDH)**


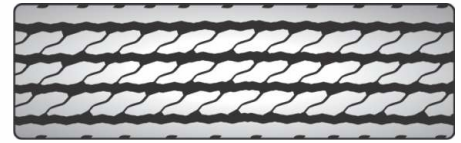
SI No	Base width (mm)	Length (Inches)	NSD (mm)	App Weight (kg)
1	230	130	17.8	14.7
2	220	129	16.5	13.2

**BLOCK LUG
(MBL)**


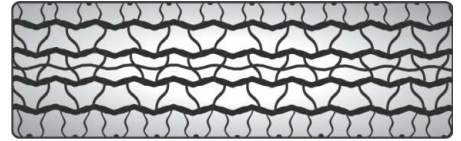
SI No	Base width (mm)	Length (Inches)	NSD (mm)	App Weight (kg)
1	210	127	14.5	10.8

POWER RADIAL (MPR)


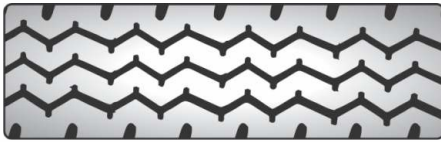
SI No	Base width (mm)	Length (Inches)	NSD (mm)	App Weight (kg)
1	185	118	10	6.5
2	185	92	10	5.1
3	170	125	12	5.8
4	160	87	10.2	4
5	150	125	8.5	4.1
6	140	125	8.5	3.8
7	130	90	10.2	3.3

DRIVE MASTER (MDM)


SI No	Base width (mm)	Length (Inches)	NSD (mm)	App Weight (kg)
1	210	127	14	11

ZOOM RADIAL (MZR)


SI No	Base width (mm)	Length (Inches)	NSD (mm)	App Weight (kg)
1	240	147	15	14.7
2	240	136	15	13.7
3	240	128	15	13.2
4	230	147	15	15.3
5	230	136	15	14.2
6	230	128	15	13.3
7	220	147	15	14.2
8	220	136	15	13.2
9	220	128	15	12.4
10	210	128	15.5	12.1

JET EXPRESS (MJE)


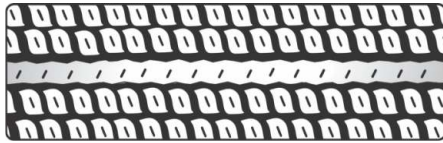
SI No	Base width (mm)	Length (Inches)	NSD (mm)	App Weight (kg)
1	240	147	13.5	14.4
2	240	136	13.5	13.4
3	240	128	13.5	12.7
4	230	141	15	14.7
5	230	136	15	14
6	215	147	15.5	14.4
7	215	128	15.5	12.1

GRIP RADIAL (MGR)

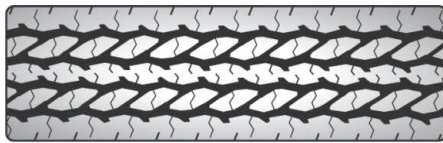

SI No	Base width (mm)	Length (Inches)	NSD (mm)	App Weight (kg)
1	230	147	15.5	15.3
2	230	131	15.5	12.8
3	220	128	15.5	12.3
4	215	128	15	12
5	210	128	12.5	10.1

BLOCK GRIP (MBG)

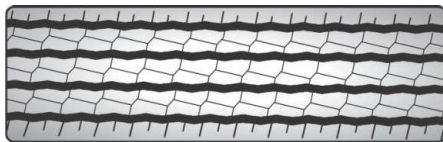

SI No	Base width (mm)	Length (Inches)	NSD (mm)	App Weight (kg)
1	220	130	14.5	12
2	210	128	14.5	11.3
3	180	118	12	8.1
4	180	105	12	7.1
5	180	100	12	6.8

**ASTRA
(MAS)**


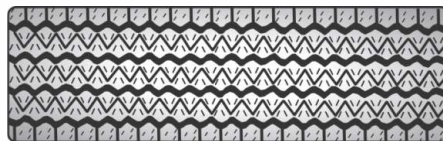
SI No	Base width (mm)	Length (Inches)	NSD (mm)	App Weight (kg)
1	156	87	11.5	4.9
2	120	130	11	5

**DIAMOND
RADIAL (MDR)**


SI No	Base width (mm)	Length (Inches)	NSD (mm)	App Weight (kg)
1	148	94	11.5	4.7

**BLOCK
RIB (MBR)**


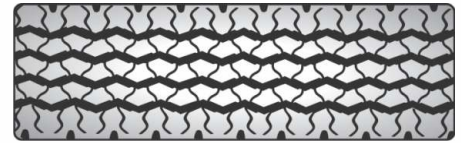
SI No	Base width (mm)	Length (Inches)	NSD (mm)	App Weight (kg)
1	200	127	12.5	10.3
2	200	100	12.5	8.3

**JEEP RADIAL
(MJR)**


SI No	Base width (mm)	Length (Inches)	NSD (mm)	App Weight (kg)
1	175	87	12.3	5.4

**SUMO RADIAL
(MSR)**


SI No	Base width (mm)	Length (Inches)	NSD (mm)	App Weight (kg)
1	173	87	12	4.8

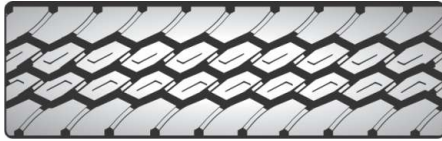
**HIGHWAY
RADIAL (MHR)**


SI No	Base width (mm)	Length (Inches)	NSD (mm)	App Weight (kg)
1	235	147	15	15.1
2	235	136	15	13.9
3	235	128	15	13.1
4	230	147	15	14.8
5	230	135	15	13.8
6	230	130	15	12.9
7	220	128	15	12.5
8	215	128	15	12
9	205	128	14.5	12
10	200	127	13	10.8

**LOAD DRIVE
(MLD)**

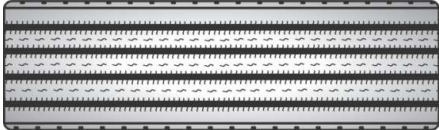

SI No	Base width (mm)	Length (Inches)	NSD (mm)	App Weight (kg)
1	230	130	16	13.2
2	220	130.5	16	12.8

**DRIVE GRIP
(MDG)**



SI No	Base width (mm)	Length (Inches)	NSD (mm)	App Weight (kg)
1	220	130	13.5	12

**ROAD KING
(MRK)**



SI No	Base width (mm)	Length (Inches)	NSD (mm)	App Weight (kg)
1	220	130	14.5	11.7

**HIGH GRIP
(MHG)**



SI No	Base width (mm)	Length (Inches)	NSD (mm)	App Weight (kg)
1	240	147	15.5	15
2	240	129	15.5	13.1

TYRE AND TUBE REPAIR PATCHES



The year was 2010 and our Founder, Promoter, Entrepreneur Mr Ajit Patil, was driving around in his luxury Car, One of its brand new radial tyre developed a puncture and irony was he couldn't find anybody with a good premium quality Radial patch, although hopping every mom and pop stores available around.....As he himself has been a technocrat, widely travelled and also was already into manufacturing and selling of Conventional

Tread Rubber (CTR), Precured Tread Rubber (PCTR), Bonding Gum and Black Vulcanizing Cement (Brand MAHANT) he felt that there was a need for Quality Patches and with that obstinacy he set up a state of the art manufacturing plant in Belgaum employing who is who - from the top notch Patch manufactures of the world, adopting and implementing accepted standards, practices and procedures thus delivering a Dream Product which was christened as VUL TEC, where VUL is the abbreviation for Vulcanizing and TEC is the abbreviation for Technology meaning Vulcanizing Technology.

Today VUL TEC (registered under copyright act) is a matured brand which has carved a niche in the market with high retention and appreciation value built over by robust status for excellent Quality, Reliability, Consistency and Depth thus justifying the tagline "Perfection Unmatched".

MAHANT has categorized the undermentioned products as Repair Materials and the range has been named as Vultec.

- 1. Biased Ply Tyre Patches (Dual/versa and Chemical cure)**
- 2. Radial Tyre Patches (Dual/versa and Chemical cure)**
- 3. Tube Patches (Dual/versa and Chemical cure)**
- 4. Plug Patches**
- 5. Rubber Solution (CVF)**
- 6. Blue cement**
- 7. Cycle repair Solution**
- 8. Vulcanizing Rubber (Bonding Gum/ Cushion Gum/VulGum)**
- 9. Under Tread Strip (UTS)**

Bouquet VUL TEC caters to a wide spectrum in the Tyre (Bias/ Radial) & Tube category with every size from Bicycles to mammoth mining Tyres & Tubes including Trucks and Tractors MAHANT for the deliverables of make VUL TEC, employs around 120 highly trained and skilled manpower allowing them access to one of the best machineries, utilities and Systems used in business world over. Today VUL TEC has traversed 7 Seas, grappled 4 Continents and available on shelf in 24 countries that includes Europe, South America, Africa, Middle East to name a few.

BONDING GUM / CUSHION GUM / VULGUM (BG)



MAHANT'S Bonding Gum made from premium quality natural rubber with great workability characteristics and strength with excellent adhesion properties and shelf life. Bonding gum is available for both precured and mould cured process.

Same can also be used for filling up casing injuries, buzz-outs, exposed cords, spot repairs, reinforced repairs and section repair. It can also be manufactured as per customers requirements to suit operation for 125-degree C and 99-degree C in single and double poly coils.

Segments in Bonding Gum

- Premium Gum
- Standard Gum (Eco)

Bonding Gum Coils in

- 1 Kg pack
- 5 Kg pack
- 10 Kg pack



Note

- Always store Bonding gum in a cool, clean and dry place where the temperature does not exceed 25-degree C.
- Bonding Gum used/unused should be kept and maintained in original packing.
- Bonding Gum should be never be exposed to water, oil, air and dust, heat and sunlight.
- Should be always used with Mahant's Black Vulcanising Solution/cement.

UNDER TREAD STRIP (UTS)

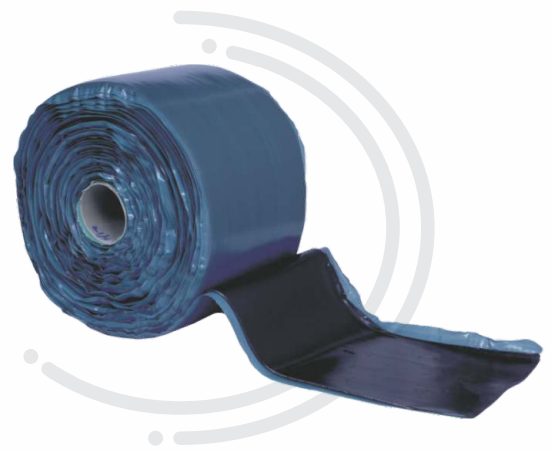
Under the tread, UTS is used to provide superior finish to the shoulder/ side walls in mould cure process. It is manufactured as per customer's specification up to 177.8 / 7 inch and 2.50 mm gauge to suit operation for 150 degree Celsius in single poly coils. UTS is available for both precured and mould cure process.

Note

- Always store UTS in a cool, clean and dry place.
- UTS used/unused should be kept and maintained in the original place.
- UTS should never be exposed to water, oil, air and dust, heat & sunlight.

UTS Coils in

- 5 kg pack
- 10 kg pack



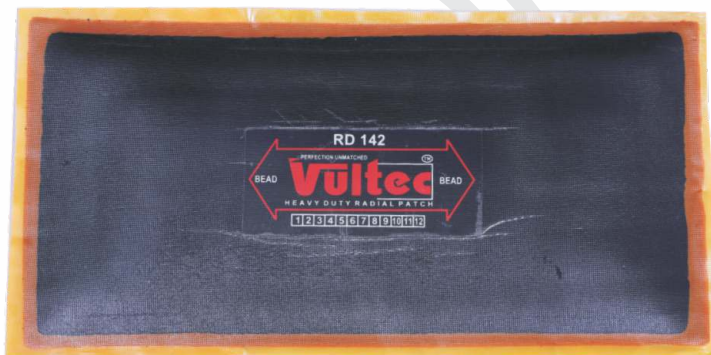
TYRE & TUBE REPAIR PATCHES

Bias & Radial Tyres- puncture Repairs in Versa/Dual Cure & Chemical Cure for Repairing Passenger car, Truck, Tractor & Off-the-Road tyres in Radial & Bias/Diagonal tyres & tubes.

VULTEC premium repair units are cured at the factory under ideal, controlled thermocouple pressure & temperatures, assuring accurate positioning of the ply layer parcel, rubber jacketing and gum strips. Whichever type you choose, the Tyre/ tube repair units are premediated to be consumer-friendly in less than idyllic condition

Versa Cure

Dual cure/Versa cure repair units feature a base gum that will cure chemically or with heat. This soft, high tack gum is less prone to problems associated with moisture, handling and cement drying time.



Chemical Cure

Chemical cure repair units are moulded to a feather edge and feature a chemical curing base gum with the ultimate in green tack, along with extended poly backing for ease of removal and installation.

Bias Repairs: Versa Cure & Chemical Cure

VULTEC Bias or Diagonal tyre patches are used for a puncture, reinforced and section repairs on passenger, light truck and truck and heavy-duty truck and tractor, tube type or tubeless tyres. VULTEC Bias or Diagonal tyres patches are made with full ply construction they are manufactured with a ply of special rubber compound between the nylon fibres and cushion gum which acts as a float or a shock-absorbing ply, they are given a die-cut by an imported Italian machines and then moulded into an octagonal shape for strength and ease of installation. Tyres injuries from 3 mm (1/8") to 125 mm (5") can be repaired.



Bias Tyre Patches

Versa Cure & Chemical Cure Size Chart



Product Code Versa Cure	Versa Cure Biased Tyre Patches	Product Code Chemical Cure	Chemical Cure Biased Tyre Patches	Dimensions of Patches in mm	Ply Rating	Qty Per Box
VTR001	BP-0	CTR201	BP-00	55 Dia	1	25
VTR002	BP-1	CTR202	BP-01	75 Dia	2	20
VTR003	BP-2	CTR203	BP-02	90 Dia	2	10
VTR004	BP-3	CTR204	BP-03	132 x 132	2	10
VTR005	BP-4	CTR205	BP-04	152 x 152	4	10
VTR006	BP-5	CTR206	BP-05	177 x 177	4	10
VTR007	BP-6	CTR207	BP-06	240 x 240	6	5
VTR008	BP-7	CTR208	BP-07	290 x 290	6	5
VTR009	BP-8	CTR209	BP-08	340 x 340	6	5
VTR010	BP-9	CTR210	BP-09	380 x 380	8	3
VTR011	BP-10	CTR211	BP-010	430 x 430	8	3

Dual Cure Repair units provide many benefits to the tyres/ tube repairman

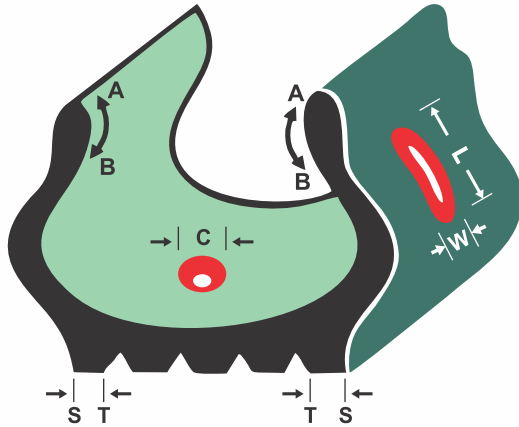
- **Consumer Friendly:** - Their soft, high tack gum is less prone to problems associated with moisture, handling and cement drying time, allowing easy application.
- **Superior Green Tack:** - Soft and tacky Dual cure Base Gum locks the repair unit in place until a full cure has occurred.
- **Optimal Adhesion:** - Dual bonding gum has over twice the adhesive strength of chemical cure repair units.
- **Flexibility in Use:** - Depending on your need, Dual cure repair units will fully cure during the retreading process, in a section mould/bonder/chamber or with the heat and pressure created by a tyre.

Note

Dual Cure/ Versa Cure Repair Units

- Dual cure repair units, vulcanize either way
- When heat & pressure are applied (use Black Vulcanizing Cement for Heating)
- Chemical Cure vulcanize at room temperature. (Use Chemical vulcanizing cement)

Repair Charts for Bias Tyres



C : Crown Injury
 W : Width of Injury
 L : Length of Injury
 T-S : Shoulder Area
 T-T : Crown Area

A-B NON REPAIRABLE AREA

Tyre Size	From the Beed	
7.00 - 8.75	3"	75mm
9.00 - 14.00	4"	100mm
16.00 - 18.00	5"	125mm
21.00 - 27.00	6"	150mm

BIAS PLY TYRE - REPAIR CHART



INJURY SIZE	Inch	1/8"	1/4"	3/8"	1/2"	3/4"	1	1 1/2"	2"	2 1/2"	3"	4"	4 1/2"	5"
	mm	3	6	10	13	20	25	40	50	65	75	100	115	125
PLY RATING	4	BP-0	BP-0	BP-1	BP-2	BP-3	BP-3	BP-4	BP-5					
	6	BP-0	BP-0	BP-1	BP-2	BP-3	BP-3	BP-4	BP-5	BP-6				
	8	BP-0	BP-0	BP-2	BP-3	BP-3	BP-4	BP-4	BP-5	BP-6				
	10	BP-0	BP-1	BP-2	BP-3	BP-3	BP-4	BP-5	BP-6	BP-6	BP-7	BP-8		
	12	BP-0	BP-1	BP-2	BP-4	BP-4	BP-4	BP-5	BP-6	BP-6	BP-7	BP-8		
	14	BP-0	BP-1	BP-3	BP-4	BP-4	BP-5	BP-6	BP-6	BP-7	BP-7	BP-8	BP-9	BP-10
	16	BP-0	BP-1	BP-4	BP-4	BP-5	BP-5	BP-6	BP-6	BP-7	BP-7	BP-8	BP-9	BP-10
	18	BP-0	BP-1	BP-4	BP-5	BP-5	BP-6	BP-6	BP-7	BP-8	BP-8	BP-9	BP-10	BP-10
	20	BP-0	BP-1	BP-4	BP-5	BP-5	BP-6	BP-7	BP-8	BP-8	BP-9	BP-9	BP-10	BP-10
	22	BP-0	BP-1	BP-4	BP-6	BP-6	BP-7	BP-8	BP-8	BP-8	BP-9	BP-10	BP-10	

FOR PLY DAMAGES UPTO HALF OF THE CARCASS THICKNESS ON TREAD, SHOULDER, SIDEWALL



Injury Size	Inch	1/8"	3/8"	1/2"	1"	2"	3"	4"	5"
	mm	3	10	13	25	50	75	100	125
PLY RATING	8-12	BP-0	BP-1	BP-2	BP-3	BP-4	BP-6	BP-7	BP-8
	14-18	BP-0	BP-1	BP-2	BP-4	BP-5	BP-6	BP-7	BP-8
	20-22	BP-0	BP-2	BP-3	BP-5	BP-6	BP-7	BP-8	BP-9

Note

- The above-mentioned data is for reference only.
- Consult tyre manufacturer for repair limitations, for sidewall repairs use next sized patch.
- The patch number mentioned above on the table is applied for Versa cure and Chemical cure patches.

OTR (Off The Road) Bias Repairs

VULTEC OTR repair patches are used to repair a puncture, reinforced and section injuries in bias ply Off the Road tyre of heavy-duty machines (Construction, Earth Moving). OTR repair units are made up from strips of cords over-laid in an obscure-spaced design to form a square lattice providing a large platform area in a smaller patch. The units have die-cut edges reverberations the cord-end stresses get disturbed across a radius area avoiding lifting of the cord edges. We also manufacture patches for sidewalls reinforced and section injuries in joint tyres. This type of construction provides a small and flexible unit that can be applied parallel or perpendicular to the bead as dictated by the injury location. VULTEC OTR Repair patches can repair injuries up to 300 mm. and up to 52 ply rating off the standard tyres.

Earthmover/OTR Tyres/ Butterfly Tyre Patches

Product Code Versa Cure	Product Code Chemical Cure	Product Description	Dimensions of Patches in mm	Ply Rating	Qty per Box
VTR058	CTR258	TOR-BF 1	288	4	5
VTR059	CTR259	TOR-BF 2	308	4	5
VTR060	CTR260	TOR-BF 3	348	6	5
VTR061	CTR261	TOR-BF 4	430	6	3
VTR062	CTR262	TOR-BF 5	520	6	3
VTR063	CTR263	TOR-BF 6	560	8	3
VTR064	CTR264	TOR-BF 7	560	8	1
VTR065	CTR265	TOR-BF 8	595	10	1

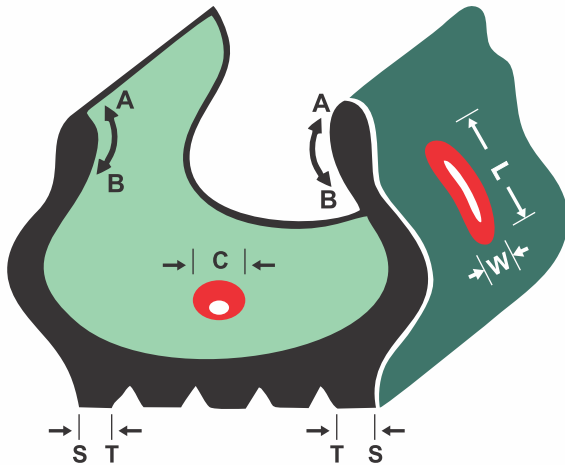


Earthmover/OTR Tyres/Square Patches

Product Code Versa Cure	Product Code Chemical Cure	Product Description	Dimensions of Patches in mm	Ply Rating	Qty per Box
VTR066	CTR266	TOR-SQ 1	295 X 295	4	5
VTR067	CTR267	TOR-SQ 2	346 X 346	4	5
VTR068	CTR268	TOR-SQ 3	357 X 357	6	5
VTR069	CTR269	TOR-SQ 4	546 X 546	6	3
VTR070	CTR270	TOR-SQ 5	490 X 590	6	3
VTR071	CTR271	TOR-SQ 6	612 X 612	8	3
VTR072	CTR272	TOR-SQ 7	650 X 650	8	1
VTR073	CTR273	TOR-SQ 8	728 X 728	10	1



Repair Charts for OTR (Off The Road) Bias Repairs



C : Crown Injury
 W : Width of Injury
 L : Length of Injury
 T-S : Shoulder Area
 T-T : Crown Area

A-B NON REPAIRABLE AREA

Tyre Size	From the Beed	
16.00 - 18.00 (20.5 - 23.5)	5"	110 mm
26.00 - 27.00 (26.5 - 33.5)	6"	150 mm
30.00 - 33.00 (37.25 - 37.5)	7"	175 mm
36.00 and Above	8"	200 mm

OTR (Off The Road) Bias Repair Chart



INJURY SIZE	Inch	1"	2"	3"	4"	5"	6"	7"	8"	9"	10"
	mm	(25mm)	(50mm)	(75mm)	(100mm)	(125mm)	(150mm)	(175mm)	(200mm)	(225mm)	(250mm)
PLY RATING	6-12	TOR-1	TOR-1	TOR-2							
	14-16	TOR-1	TOR-2	TOR-3	TOR-3	TOR-3	TOR-4				
	18-20	TOR-1	TOR-2	TOR-3	TOR-3	TOR-4	TOR-4	TOR-5			
	22-24	TOR-1	TOR-2	TOR-3	TOR-4	TOR-4	TOR-5	TOR-6	TOR-6	TOR-7	
	26-28	TOR-1	TOR-2	TOR-4	TOR-4	TOR-5	TOR-6	TOR-6	TOR-6	TOR-7	TOR-7
	30-36	TOR-1	TOR-2	TOR-4	TOR-5	TOR-5	TOR-6	TOR-7	TOR-7	TOR-7	TOR-7
	38-44	TOR-1	TOR-2	TOR-5	TOR-5	TOR-6	TOR-7	TOR-7	TOR-8	TOR-8	TOR-7
	46-50	TOR-2	TOR-3	TOR-5	TOR-6	TOR-7	TOR-7	TOR-7	TOR-8	TOR-8	TOR-8
	52-58	TOR-2	TOR-3	TOR-5	TOR-6	TOR-7	TOR-7	TOR-8	TOR-8	TOR-8	TOR-8
	60-68	TOR-3	TOR-4	TOR-6	TOR-7	TOR-7	TOR-8	TOR-8	TOR-8	TOR-8	TOR-8

Note

- The above-mentioned data is for reference only.
- Consult tyre manufacturer for repair limitations for sidewall repairs use next sized patch.
- The patch number mentioned above on the table is applied for Versa cure and Chemical cure patches.

Radial Tyre Repairs

VULTEC Radial tyre patches are used to repair a puncture, reinforced and section injuries in passenger, light truck, truck and heavy-duty truck and farm radials/tubeless tyres. The patches are to be centred over the injury because of special code reinforcement and ply construction. Each patch unit features a special compounding and design, directionally polyester fibres, toughened platform providing added strength (wedge construction), heat reduction while preserving flexibility. Die-cut feather edges distribute the cord and stress across the radialised area preventing the lifting of cord edges.

With VULTEC repairs, there is no need to apply the repair from the non-flex area to non-flex area. This special construction reduces the effect of flexing and also reduces inventory requirement since they can be used for CROWN, SHOULDER and SIDEWALL repairs.



Radial Tyre Patches – Passenger Car Tyres



Product Code Versa Cure	Versa Cure Radial Tyre Patches	Product Code Chemical Cure	Chemical Cure Radial Tyre Patches	Dimensions of Patches in mm	Ply Rating	Qty Per Box
VTR012	RD 10	CTR212	RD 110	55 X 80	1	20
VTR013	RD 10HD	CTR213	RD 110HD	65 X 80	1	10
VTR014	RD 10HD +	CTR214	RD 110HD +	75 X 90	1	10
VTR015	RD 12	CTR215	RD 112	60 X 110	1	10
VTR016	RD 12HD	CTR216	RD 112HD	70 X 115	1	10
VTR017	RD 14	CTR217	RD 114	78 X 140	1	10
VTR018	RD 14HD	CTR218	RD 114HD	85 X 130	1	10
VTR019	RD 14HD +	CTR219	RD 114HD +	84 X 163	1	10
VTR020	RD 15HD*	CTR220	RD 115HD	75 x 90	1	10

Radial Tyre Patches – LCV & Truck Tyres



LCV & Truck Tyre Patches



Product Code	Versa Cure Radial Tyre Patches	Product Code	Chemical Cure Radial Tyre Patches	Dimensions of Patches in mm	Ply Rating	Qty Per Box
VTR021	RD 20	CTR221	RD 120	75 x 125	2	10
VTR022	RD 20 HD	CTR222	RD 120 HD	85 X 130	2	10
VTR023	RD 20 HD+	CTR223	RD 120 HD+	90 X 148	2	10
VTR024	RD 22	CTR224	RD 122	75 x 165	2	10
VTR025	RD 22 HD	CTR225	RD 122 HD	85 x 180	2	10
VTR026	RD 22 HD+	CTR226	RD 122 HD+	95 x 180	2	10
VTR027	RD 24	CTR227	RD 124	75 x 215	2	10
VTR028	RD 24 HD	CTR228	RD 124HD	90 x 220	3	10
VTR029	RD 26	CTR229	RD 126	75 x 250	3	10
VTR030	RD 26 HD	CTR230	RD 126HD	90 x 250	4	10
VTR031	RD 33*	CTR231	RD 133	100 x 125	4	10
VTR032	RD 33+*	CTR232	RD 133+	114 x 128	4	10
VTR033	RD 35*	CTR233	RD 135	125 x 150	4	10
VTR034	RD 35+*	CTR234	RD 135+	135 x 162	4	10
VTR035	RD 37*	CTR235	RD 137	125 x 175	4	10
VTR036	RD 37+*	CTR236	RD 137+	140 x 180	4	10
VTR037	RD 40	CTR237	RD 140	100 x 200	3	10
VTR038	RD 40 HD	CTR238	RD 140 HD	110 X 210	4	10
VTR039	RD 40 HD+	CTR239	RD 140 HD+	120 x 215	4	10
VTR040	RD 42	CTR240	RD 142	125 x 250	4	10
VTR041	RD 42 HD	CTR241	RD 142 HD	135 X 260	4	10
VTR042	RD 42 HD+	CTR242	RD 142 HD+	140 x 270	4	10
VTR043	RD 44	CTR243	RD 144	125 x 325	4	5
VTR044	RD 44+	CTR244	RD 144+	140 x 335	4	5

OTR Radial Tyre Repairs

VULTEC OTR tyre repairs patches are used to repair a puncture, reinforced and section injuries in radial-ply Off the Road Tyre of Heavy-duty machines (Construction, Earthmoving). Their radial units feature an elongated step down between plies, together with extra top cover stock thus allowing the repair unit to be placed over the injury and affixed in any flex area of the tyre. With VULTEC repairs, there's no need to apply the repair from the non-flex area to non-flex area. This distinct construction reduces the effect of flexing and reduces inventory requirements since they can be used for CROWN, SHOULDER and SIDEWALL repairs.



Earthmover/OTR Tyre



Product Code	Versa Cure Radial Tyre Patches	Product Code	Chemical Cure Radial Tyre Patches	Dimensions of Patches in mm	Ply Rating	Qty Per Box
VTR045	RD 45*	CTR245	RD 145	185 x 235	4	5
VTR046	RD 46	CTR246	RD 146	140 x 400	4	5
VTR098	RD 47	CTR298	RD 147	260 x 305	4	5
VTR047	RD 50	CTR247	RD 150	190 x 500	4	5
VTR048	RD 52	CTR248	RD 152	250 x 450	4	5
VTR049	RD 56*	CTR249	RD 156	253 x 635	6	5
VTR050	RD 60	CTR250	RD 160	265 x 860	6	3
VTR051	RD 65*	CTR251	RD 165	330 x 420	6	3
VTR052	RD 70	CTR252	RD 170	315 x 560	5	3
VTR053	RD 72*	CTR253	RD 172	215 x 710	6	3



Tractor Tyre



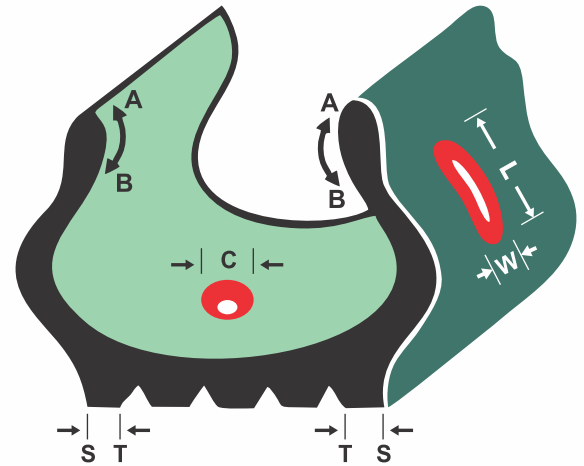
Product Code	Versa Cure Radial tyre Patches	Product Code	Chemical Cure Radial Tyre Patches	Dimension of Patches in mm	Ply Rating	Qty Per Box
VTR054	RD 80	CTR254	RD 180	150 x 195	6	5
VTR055	RD 82	CTR255	RD 182	190 x 250	6	5
VTR056	RD 84	CTR256	RD 184	215 x 290	6	5
VTR057	RD 86	CTR257	RD 186	245 x 340	8	5

(Recommended to use only VULTEC Chemical Vulcanizing Fluid for Perfect Bonding)

RADIAL TYRES - REPAIR CHART

PASSENGER CAR TYRE REPAIR CHART

CROWN INJURY Inches (mm)	SIDEWALL INJURY		PASSENGER CAR TYRE SIZES	
	WIDTH Inches (mm)	LENGTH Inches (mm)	125 - 175	185 - 255
	1/4"(6mm)	1/4" (6mm)	1/2"(13mm)	RD 10
	1/4" (6mm)	1 1/2" (40mm)	RD 12	RD 12
	1/4" (6mm)	2" (50mm)	RD 14	RD 14
3/8" (10mm)	3/8" (10mm)	3/8" (10mm)	RD 10	RD 10
	3/8" (10mm)	1 1/2" (40mm)	RD 12	RD 12
	3/8" (10mm)	2" (50mm)	RD 14	RD 14
1/2" (13mm)	1/2" (13mm)	1 1/2" (40mm)	RD 12	RD 12
	1/2" (13mm)	2" (50mm)	RD 14	RD 14
3/4" (20mm)	3/4" (20mm)	1 1/2" (40mm)	RD 12	RD 12
	3/4" (20mm)	2" (50mm)	RD 14	RD 14
1" (25mm)	1" (25mm)	1 1/2" (40mm)	RD 14	RD 14
	1" (25mm)	2" (50mm)	RD 14	RD 22



TRUCK, LCV RADIAL TYRE REPAIR CHART



CROWN INJURY INCHES (MM)	SIDE WALL INJURY		UTILIZE RADIAL REPAIR PATCHES - RD TRUCK TYRE SIZE		
	WIDTH INCHES (MM)	LENGTH INCHES (MM)	6.00-7.50	8.25 - 10.00	11.00 - 14.00
			7R - 8.5R	9R - 11R	12R - 16.5R
3(mm)	1 1/8" (3mm)	1/8" (3mm)	RD 10	RD 10	RD 10
1/4" (6mm)	3/8" (10mm)	3/8" (10mm)	RD 12	RD 12	RD 12
	1 Cable	1 1/2" (40mm)	RD 20	RD 20	RD 20
	1 Cable	3" (75mm)	RD 22	RD 22	RD 22
	1 Cable	5" (125mm)		RD 24	RD 24
	1 Cable	6" (150mm)		RD 26	RD 26
1/2" (13mm)			RD 22	RD 33	RD 33
	2 Cable	3/4" (20mm)	RD 20	RD 20	RD 22
	2 Cable	1 1/2" (40mm)	RD 20	RD 22	RD 24
	2 Cable	2 1/2" (65mm)	RD 22	RD 24	RD 26
	2 Cable	5 1/8" (130mm)		RD 26	RD 26
	3/8" (10mm)	1 1/2" (40mm)	RD 20	RD 26	RD 40
	3/8" (10mm)	2 3/8" (60mm)	RD 22	RD 26	RD 40
	3/8" (10mm)	3 1/8" (80mm)	RD 26	RD 26	RD 42
	3/8" (10mm)	5" (125mm)		RD 26	RD 42
3/4 (20mm)			RD 24	RD 33	RD 35
	1/2" (13mm)	1 1/2" (40mm)	RD 22	RD 40	RD 40
	1/2" (13mm)	2 1/2" (65mm)	RD 22	RD 40	RD 42
	1/2" (13mm)	4" (100mm)		RD 42	RD 44
	1/2" (13mm)	5" (125mm)		RD 42	RD 44
	3/4 (20mm)	1" (25mm)	RD 22	RD 40	RD 42
	3/4 (20mm)	2 1/2" (65mm)		RD 42	RD 44
	3/4 (20mm)	4 1/8" (110mm)		RD 42	RD 44
	3/4 (20mm)	5 1/8" (130mm)		RD 44	RD 44
1" (25mm)			RD 33	RD 35	RD 35
	1" (125mm)	2" (50mm)	RD 40	RD 42	RD 44
	1" (125mm)	3" (75mm)		RD 42	RD 44
	1" (125mm)	4" (100mm)		RD 44	RD 44
1 1/4" (32mm)				RD 37	RD 37
	1 1/4" (32mm)	2" (50mm)		RD 42	RD 44
	1 1/4" (32mm)	3 1/8" (80mm)		RD 44	RD 44
	1 1/4" (32mm)	4" (100mm)		RD 44	RD 44
1 1/2" (40mm)				RD 37	RD 37
	1 1/2" (40mm)	2" (50mm)		RD 44	RD 44
	1 1/2" (40mm)	3 1/8" (80mm)		RD 44	RD 44
	1 1/2" (40mm)	4" (100mm)		RD 44	RD 46

C : Crown Injury
W : Width of Injury
L : Length of Injury
T-S : Shoulder Area
T-T : Crown Area

(A-B) NON-REPAIRABLE AREA

Tyre Size	From the Beed	
Passenger	1 1/2"	(40mm)
6.50 - 7.00	2 1/2"	(65mm)
7.50 - 16.00	3"	(75mm)

Note

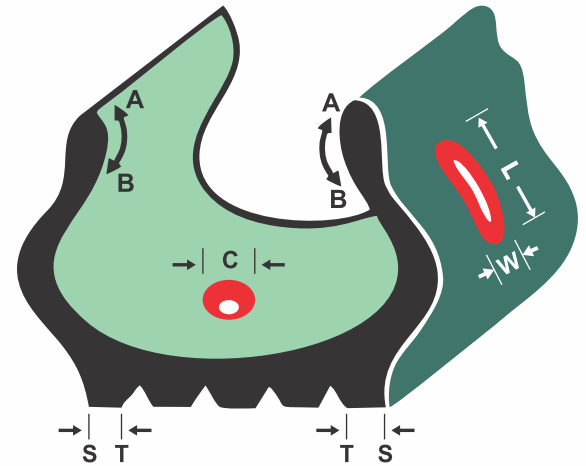
- Radial Repair patches RD 33,35,37,45,47,65 are specially meant for crown injury Repairs.
- The above-mentioned data is for reference only.
- Consult tyre manufacturer for repair limitations.
- The patch number mentioned above on the table is applied for Versa cure and Chemical cure patches

RADIAL TYRES - REPAIR CHART

TRACTOR TYRE - REPAIR CHART



CROWN INJURY INCHES (mm)	SIDE WALL INJURY		Tractor Tyre Sizes	
	WIDTH INCHES (mm)	LENGTH INCHES (mm)	8 - 11 8.3 - 12.4	12 - 15 13.6 - 30.5
3/8" (10mm)	3/8" (10mm)	3/8" (10mm)	RD 12	RD 12
3/4" (10mm)	3/8" (10mm)	1 1/2" (40mm)	RD 20	RD 20
3/4" (20mm)	2" (50mm)		RD 22	RD 80
1 1/2" (40mm)	1 1/2" (40mm)	3" (75mm)	RD 80	RD 82
2" (50mm)	2" (50mm)		RD 80	RD 82
2 1/2" (65mm)	2 1/2" (65mm)	4" (100mm)	RD 82	RD 82
3 1/2" (90mm)	3" (75mm)	3" (75mm)	RD 82	RD 82
3" (75mm)	5" (125mm)		RD 82	RD 82
3" (75mm)	4" (100mm)			RD 84
5" (125mm)	4" (100mm)	6" (150mm)		RD 86
5" (125mm)	5" (125mm)			RD 86



OTR (OFF THE ROAD) - RADIAL REPAIR CHART



CROWN INJURY Inches (mm)	SIDE WALL INJURY		SHOULDER INJURY Inches (mm)	EARTHMOVER TYRE SIZE		
	WIDTH Inches (mm)	LENGTH Inches (mm)		14.00 - 16.00 15.5 - 17.5 20/65 - 25/65	18.00 - 30.00 20.5 - 37.5 35/65 - 45/65	33.00 - 40.00 37.5 - 50.5 50/65 - 65/65
3/4" (20mm)				RD 45	RD 45	RD 45
1" (25mm)				RD 45	RD 45	RD 45
1 1/2" (40mm)				RD 45	RD 56	RD 56
2" (50mm)				RD 56	RD 56	RD 65
2 1/2" (65mm)				RD 56	RD 65	RD 65
3 1/2" (90mm)					RD 72	RD 72
5" (125mm)					RD 72	RD 72
			3/4" (20mm)	RD 46	RD 50	RD 52
			1" (25mm)	RD 46	RD 52	RD 52
			1 1/2" (40mm)	RD 50	RD 52	RD 56
			2" (50mm)	RD 50	RD 56	RD 56
			2 1/2" (65mm)	RD 56	RD 72	RD 72
			3" (75mm)		RD 72	RD 72
	3/4" (20mm)	3" (75mm)		RD 44	RD 44	RD 50
	3/4" (20mm)	6" (150mm)		RD 46	RD 46	RD 50
	3/4" (20mm)	8" (200mm)		RD 46	RD 50	RD 50
	1" (25mm)	6" (150mm)		RD 46	RD 46	RD 50
	1" (25mm)	10" (250mm)		RD 50	RD 52	RD 56
	2" (50mm)	6" (150mm)		RD 50	RD 50	RD 52
	2" (50mm)	10" (250mm)		RD 52	RD 52	RD 56
	2" (50mm)	12" (300mm)			RD 56	RD 60
	2" (50mm)	16" (400mm)			RD 60	RD 60
	3" (75mm)	8" (200mm)		RD 52	RD 56	RD 56
	3" (75mm)	10" (250mm)			RD 56	RD 72
	3" (75mm)	12" (300mm)			RD 56	RD 60
	4" (100mm)	6" (150mm)		RD 52	RD 56	RD 56
	4" (100mm)	8" (200mm)			RD 72	RD 72
	4" (100mm)	10" (250mm)			RD 60	RD 60

C : Crown Injury
 W : Width of Injury
 L : Length of Injury
 T-S : Shoulder Area
 T-T : Crown Area

A - B NON REPAIRABLE AREA

Tyre Size	From the Beed	
	Width	Length
14.00 - 16.00 (15.5 - 17.5)	3"	75mm
18.00 - 24.00 (20.5 - 29.5)	5"	125mm
27.00 - 33.00 (33.25 - 37.5)	6"	150mm
40/65 - 50/65 (40.5)	6 3/4"	170mm
36	8"	200mm
37.00 - 40.00 (50.5 & larger)	10"	255mm

Note

- Radial Repair patches RD ,45,47,65 are specially meant for crown injury repairs.
- The above-mentioned data is for reference only.
- Consult tyre manufacturer for repair limitations.
- The patch number mentioned above on the table is applied for Versa cure and Chemical cure patches

PILOT WIRE PLUG PATCHES (PWPP) DUAL CURE

Mahant's Vultec Pilot Wire Plug Patches can be used for Crown, Shoulder and Sidewall injuries in Bias and Radial tyres especially in passenger, light truck and truck tyres. Vultec has designed the PWPP with 30% more usable stem length and 25% thicker cap which helps repair injury up to 25 mm in Bias tyres, 13 mm in Radial tyres and specially designed rubber compound allow the repair unit to flex and resist heat and dual-cure cushion gum coats which results in permanent bond with tyre.



12mm 9 mm 6mm 3mm



Vul Plug Repairs – Bias & Radial Tyres



Product Code Plug Patches	Product Description	Plug Patch Size	Injury Size	Qty Per Box
VTL081	VUL- Plug 3	Stem Dia : 3 mm	Pin Hole Injury	18
		Stem Length : 30 mm		
		Patch Dia : 45 mm		
VTL082	VUL- Plug 6	Stem Dia : 6 mm	1/8" (3mm) Injury	20
		Stem Length : 35 mm		
		Patch Dia : 58 mm		
VTL083	VUL - Plug 9	Stem Dia : 9 mm	1/4" (6mm) Injury	20
		Stem Length : 35 mm		
		Patch Dia : 58 mm		
VTL084	VUL - Plug 12	Stem Dia : 12 mm	3/8" (9mm) Injury	8
		Stem Length : 50 mm		
		Patch Dia : 85 mm		

Note

- Radial & Bias Plug repairs for LCV's, trucks & Buses.
- Fill and seal the injury with one-piece patch and plug.

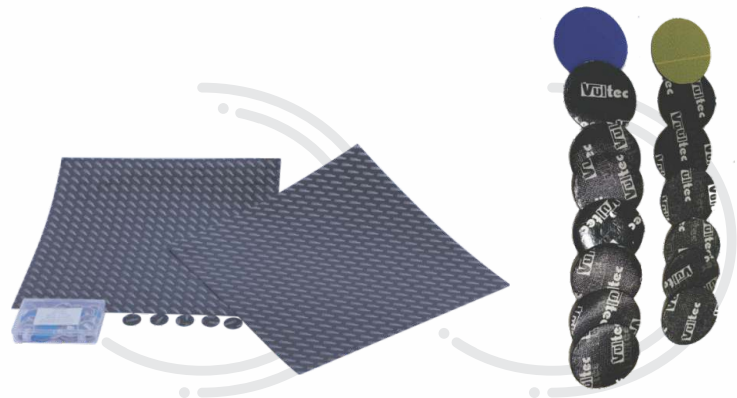
TUBE PATCHES

- VULTEC'S Versa cure and Chemical cure repair units are available in sheet form, round and oval sizes for any sizes of tube repair.
- From Bicycle to Off the Road tubes (OTR), Curing bags and Envelopes is available in every range.
- Each repair is guaranteed safe and steady and the repair is twice as strong as the original tube itself and leave no edge on repair area. The high quality of Vultec's repair is highly reliable and offers the best service.

The high quality of Vultec's repair is highly reliable and offers the best service.

Tube Repairs – Cycle Design

Product Code Versa Cure	Product Code Chemical Cure	Product Description	Injury Size in mm	Dimension in mm	Qty Per Box
VTB085	CTB285	Cycle Sheet	Nail Hole	380 X 380	25 Sheets
VTB086	CTB286	Cycle Round	Nail Hole	25	100 NOS



Tube Repairs – Round Design

Product Code Versa Cure	Product Code Chemical Cure	Product Description	Injury Size in mm	Dimension in mm	Qty Per Box
VTB087	CTB287	Tiny Round	Nail Hole	25	100
VTB088	CTB288	Mini Round	10	35	50
VTB089	CTB289	Small Round	20	45	40
VTB090	CTB290	Medium Round	30	60	30
VTB091	CTB291	Large Round	50	80	20
VTB092	CTB292	Maxi Round	60	100	10
VTB093	CTB293	Gaint Round	80	120	10



Tube Repairs – Oval Design

Product Code Versa Cure	Product Code Chemical Cure	Product Description	Injury Size in mm	Dimension in mm	Qty Per Box
VTB094	CTB294	Mini Oval	20 X 10	40 X 30	50
VTB095	CTB295	Small Oval	30 X 20	65 X 40	30
VTB096	CTB296	Medium Oval	65 X 20	100 X 50	20
VTB097	CTB297	Large Oval	110 X 30	150 X 60	10



Note

- Please apply BVC coat on the rasped surface and fix the unit and leave it in the chamber/ Bonder/ section machine for vulcanizing (Pressure Heat cure) if not apply a coat of fast dry cement like CVF on the rasped surface and the patch and fix the same and leave it to vulcanize at room temperature.
- Please ensure to use VULTEC chemical vulcanizing fluid for faultless perfect bonding.
- Please note that Red Colour product code identify as Versa Cure and Blue Colour product code identify as Chemical Cure in the size chart tables.

TYRE REPAIRS PATCHES – UNIVERSAL DESIGN

Universal repair patches are specially made up of high gauge rubber compound with high tack cushion. These patches are used in small pin hole of 3/8" injuries of biased, Radial, tubeless & tube type tyre in passenger, light truck & truck. These patches are available in two design Universal Round and Universal Square.



Universal Design - (Round Patches) Versa Cure



Product Code Versa Cure	Product Description	Size		Qty Per Box	
		Inch	mm		
VTR074	Universal Small Round	UR 0	2 1/8"	40	50
VTR075	Universal Medium Round	UR 1	3 1/8"	60	50
VTR076	Universal Large Round	UR 2	2 3/8" X 2 3/8"	80	50

Universal Design - (Round Patches) Chemical Cure



Product Code Chemical Cure	Product Description	Size		Qty Per Box	
		Inch	mm		
CTR274	Universal Small Round	UR 00	2 1/8"	40	50
CTR275	Universal Medium Round	UR 01	3 1/8"	60	50
CTR276	Universal Large Round	UR 02	2 3/8" X 2 3/8"	80	50

Universal Design - (Square Patches) Versa Cure

Product Code Versa Cure	Product Description	Dimension in mm	Ply Rtg	Qty Per Box	
VTR077	Universal Mini Square	UR 3	45 x 45	1	50
VTR078	Universal Small Square	UR 4	55 x 55	1	50
VTR079	Universal Medium Square	UR 5	65 x 65	1	50
VTR080	Universal Large Square	UR 6	75 x 75	1	50



Universal Design - (Square Patches) Chemical Cure

Product Code Chemical Cure	Product Description	Dimension in mm	Ply Rtg	Qty Per Box	
CTR277	Universal Mini Square	UR 03	45 x 45	1	50
CTR277	Universal Small Square	UR 04	55 x 55	1	50
CTR277	Universal Medium Square	UR 05	65 x 65	1	50
CTR277	Universal Large Square	UR 06	75 x 75	1	50



(Recommended to use only VULTEC Chemical Vulcanizing Fluid for Perfect Bonding)

CHEMICAL VULCANIZING FLUID (CVF)

Rubber Solution

The Rubber Solution (CVF) eliminates the lack of proper drying time which is the most common cause of failed repairs in the tube or tubeless tyres, a fast-drying solvent reduces the waiting and repair failures due to a wet fluid. CVF activates the chemical vulcanizing process to repair tyre casing.



Rubber Solution (CVF)

Product Code Rubber Solution	Product Description	Size	Qty Per Box
CMT401	Rubber Solution (CVF) Tube	30 ml	25
CMT402	Rubber Solution (CVF) Tube	75 ml	25
CMT403	Rubber Solution(CVF) Small Tin	250 ml	10
CMT404	Rubber Solution(CVF) Medium Tin	500 ml	8
CMT405	Rubber Solution(CVF) Large Tin	1000 ml	10

Blue Cement

The Blue CVF/ Cement contains unusual accelerator solution used for self- vulcanization starting from 18-degree C up to 150-degree C. It also identifies where the fluid has been applied after fluid has dried. It also reduces waiting and repair failures and activates the chemical vulcanizing process to repair tyre casing.



Blue Cement (CVF)

Product Code Blue Cement	Product Description	Size	Qty Per Box
CMT406	Blue Cement small Tin	250 ml	10
CMT407	Blue Cement Medium Tin	500 ml	8
CMT408	Blue Cement Large Tin	1000 ml	10

Note

- Brush in 250-ml, 500-ml, 1000-ml tin container.
- Recommended Adhesive for tube-type/tubeless tyres.
- Always keep the tins/tubes closed when not in use.
- Always keep away from fire and heat.
- HIGHLY FLAMMABLE: Flash Point – 4-degree C

RESEARCH, TECHNOLOGY & QUALITY CENTER

MAHANT prides itself with best in class, captive well outfitted sophisticated research and technology quality centre in the industry today equipped with computerised Mooney Viscometer, Computerised Rheometer, computerised Tensile testing machine, Hardness & Abrasion tester, Accelerated ageing oven, Muffle furnace, Brookfield Viscometer, Dementia Flexometer, Temperature-controlled baby curing press, Baby Mill. The quality centre is controlled and managed by highly qualified technical people. We direct and check pursue stringent quality gauges for review and testing of In-coming Raw materials, testing of work-in-advance compounds and finished goods, and guarantee phenomenal scattering and consistency before dispatch of finished goods to customers.

The formulation for all our products are developed in house and we constantly develop new compounds for various uses as per market specification, thus giving an edge to all our products in terms of quality norms.





- MAHANT shall not stand guarantee for any of its manufactured products which are stored or used against conditions stipulated as above.
- MAHANT will not take back/return of any of its manufactured products after ten days from the date of delivery to the customers.
- MAHANT assures you that whatever products manufactured across product category. The product performance will be the best across the competition in terms of abrasion index and loss. Tensile strength, tack ability, processing workability characteristics, Bonding/Adhesive & peeling strength in that price category.

STATEMENT OF WARRANTIES

What is covered by this Warranty and Exclusive Remedies?

MAHANT warrants the product that is the subject of this sale:

- Conforms to Mahant publishes specifications
- Is free from defects in material or workmanship.

This warranty extends to the original purchaser only.

The duration of this warranty is for one year only in case of PCTR and Patches especially Versa Cure & CVF, 3 months for CTR, Bonding gum and BVC. The warranty period begins from the date of delivery to the original purchaser. Mahant must be notified of this within 10 days. Only after investigating will we come to a conclusion in the best interest to the purchaser. The remedies listed in this section are the purchaser's EXCLUSIVE REMEDIES for breach of warranty. Any action for breach of warranty must be commenced within 12 weeks or 3 months following the delivery of goods to the original purchaser.

What is not covered in warranty ?

MAHANT does not warranty

- Any product, component, part not manufactured by MAHANT.
- Defects or damages caused by failure to provide a suitable environment for the product
- Defect or damage caused by the use of the product for purposes other than those for which it was designed
- Defect or damage caused by unauthorised attachments or modification
- Defect or damage caused by natural or man-made disasters
- Damage during shipment
- Failure to properly maintain product
- Any other abuse or misuse of the product.

Disclaimer of Warranty

THE FOREGOING WARRANTIES ARE IN LIEU OF ALL OTHER WARRANTIES, EXPRESS OR IMPLIED, INCLUDING BUT NOT LIMITED TO THE IMPLIED WARRANTIES OF MERCHANTABILITY AND FITNESS FOR A PARTICULAR PURPOSE.

Limitation of Remedies

In no case shall MAHANT be liable for any special, incidental, or consequential damages based upon breach of warranty, breach of contract, carelessness, strict tort, or any other legal theory. Such damages include, but are not limited to, loss of profits, loss of savings or revenue, loss of use of the product or any associated equipment, cost of capital, cost of any substitute equipment, facilities or services, downtime, the claims of third parties including customers, and injury to property. This limitation does not apply to claims for personal injury. Where restricted by law, the warranty and remedy limitation in this section and Section (3) will apply to the maximum extent allowed; any implied warranty of merchantability or fitness not disclaimed by operation of law is limited to the duration of the express warranty. This agreement allocates the risks of product failure between MAHANT and the purchaser. This allocation is recognized by both parties and is reflected in the product price.

No Other Warranties

Unless modified in a writing signed by both the parties, this agreement is understood to be the complete and exclusive agreement between the parties, superseding all prior agreements, oral and written, and all other communication between the parties or representations by MAHANT relating to the subject matter of this agreement. No employee or agent of MAHANT or any other party is authorized to make any warranty in addition to those made in this agreement.

Jurisdictions

For any kind of breach of warranty, the omission of errors the jurisdiction will be Belagavi, Karnataka only.



Mahant
Mileage Redefined



Mahant Industries, is a complete rubber manufacturing facility providing an efficient volume of production of Mixing, Extruding, Green or Moulded rubber, Calendaring, Bonding Adhesives and repair materials.

Located in Belgaum - Karnataka, our facilities are part of an industrial estate setting on 10 acres of land with 2,20,000 sq. ft of climate-controlled manufacturing, warehousing and distribution space.







An ISO 9001:2015 accredited co.



Mahant
Mileage Redefined



MAHANT INDUSTRIES

📍 97B, 98 C & D Honaga Industrial Area, Belagavi - 591156, Karnataka, INDIA
☎ +91 831 2415201 📞 Customer care : +91 9900255060 📠 Fax +91 831 2414301
✉ corporate@mahantrubber.com 🌐 www.mahantrubber.com

Distributor / Dealer